

1800 449 149
INFO@SYDNEYSHEDS.COM.AU

NCC2019
COMPLIANT

GRANNY FLAT COMPLIANT DEVELOPMENT

AUG 2021

**Master Builder
Better Builder!**



Master Builders Association
MEMBER
MASTER BUILDER, BETTER BUILDER

Sized for **Compliant Development** - there's no council involvement

Kit Specs; 6.2mW, 9.67mL, 2.7m Eave height, 22° Gable roof, Eaves to Side & End walls, Aluminium sliding glass windows and door with aluminium flyscreens and reveals, Internal partition wall framing, Internal wall and ceiling batten framing, Roof & External Wall sarking/vapour barriers/bulk insulation, Vermin prevention flashing, Gutter Guard, Delivery to Site, class 1a Habitable Engineering package.

Kit from **\$36,500**

All Australian made BlueScope galvanised steel frame and ColorBond® cladding with selection of 22 colours



Colorbond®



SYDNEY
SHEDS
and Garages

ABN: 54 616 281 666

Licence No: 306927C



GRANNY FLAT COMPLIANT DEVELOPMENT

AUG 2021

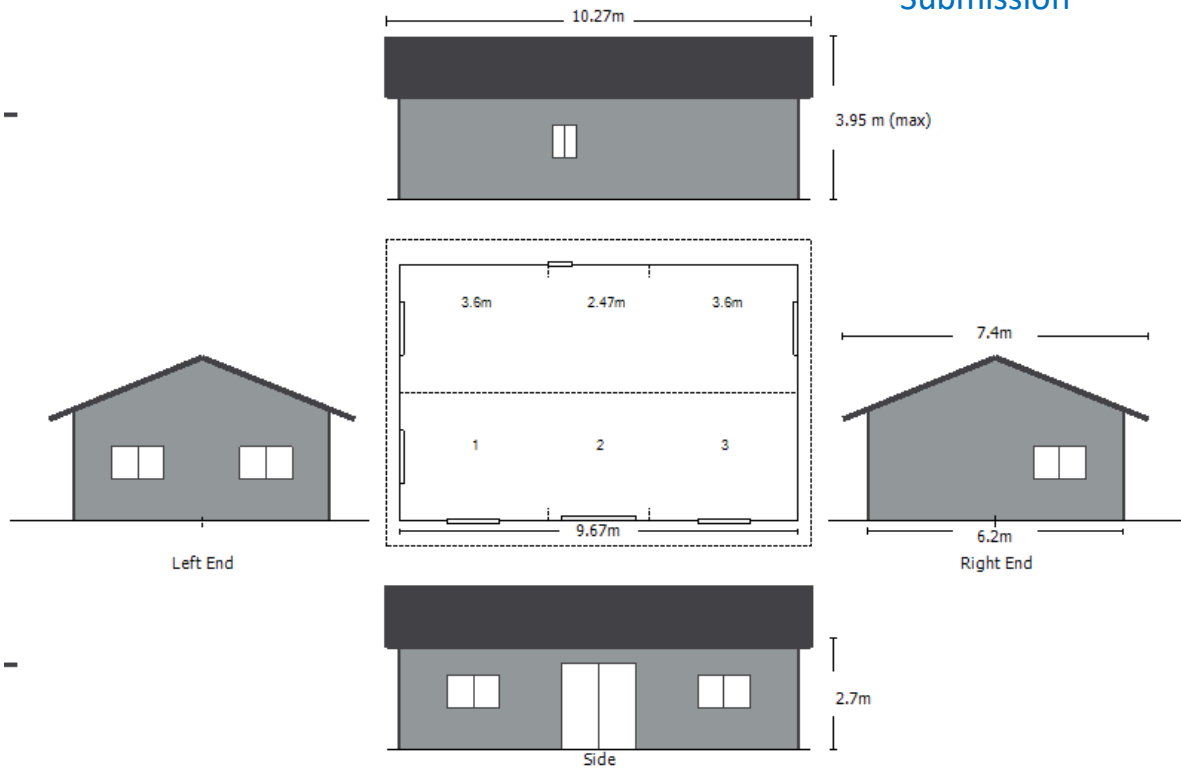


Upgrades available

- Horizontal M-Panel Wall Cladding (10 colours) \$3,000
- Horizontal Corrugated Wall Cladding \$1,700
- MATT ColorBond (3 colours) \$2,600 (excludes M-Panel)

Ask our Sales Team about;

- Installation
- Concrete Slab
- Compliant Development Submission



Kit price is for the supply and delivery to metro Sydney. Structure has been designed for 'Compliant Development'. Structure is engineered for up to 30kg/m² additional roof load. Region A residential shielded location. Downpipes supplied to base of wall sheet. Pictures are for illustrative purposes. Prices are based on soil classification A, S or M only. Site conditions to be checked before building commences. Must maintain minimum boundary setbacks applicable to local DCP and land zoning. Excludes build within Zone of Influence (ZOI) or over Sydney Water sewer assets, Electrical and plumbing, Internal doors, Skirting and Architrave, Hot water system, Wardrobes, Floor coverings, Painting, Bushfire protection (BAL), BASIX Assessment, Council/Planning application, Wet area floor and wall covering, Plasterboard lining and cornice, Kitchen, Bathroom, Laundrette fit out, Services connections (power, water, gas, sewer).



ABN: 54 616 281 666 Licence No: 306927C